

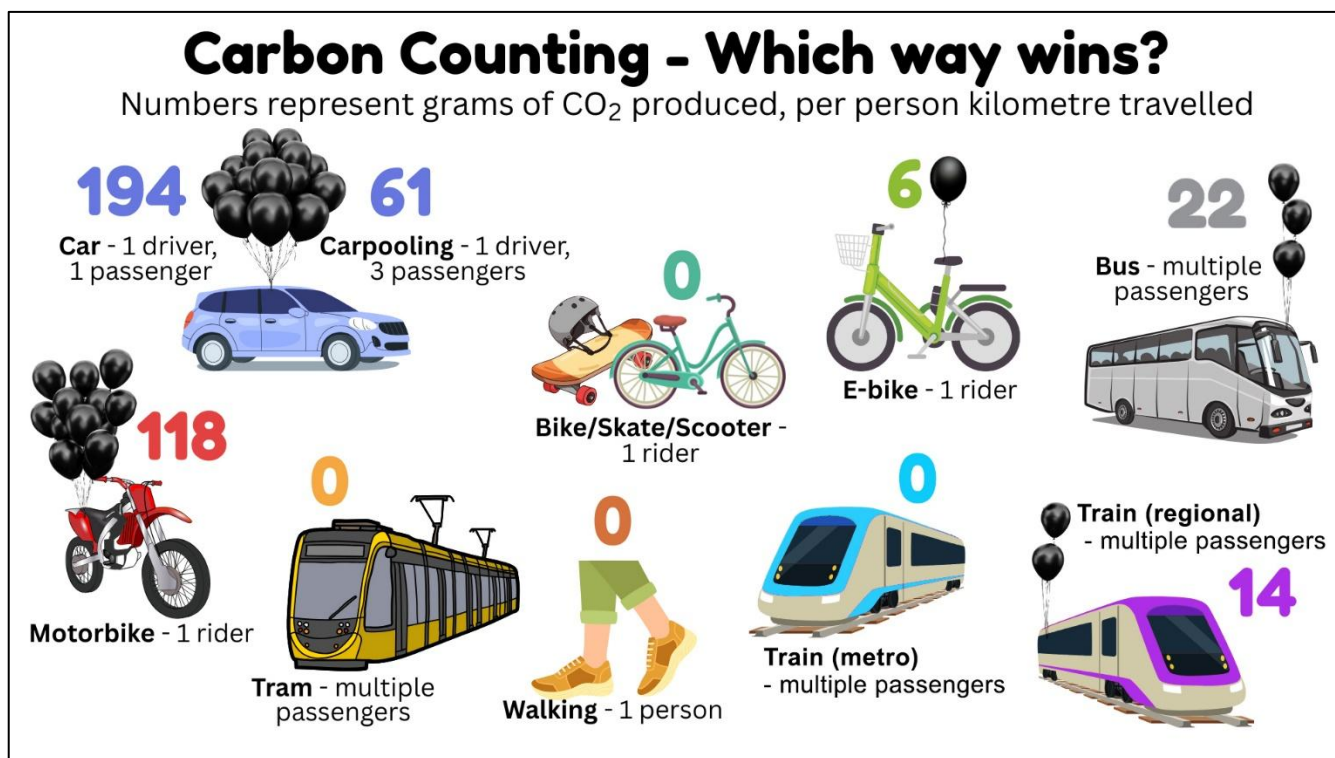
LESSON 3 : STUDENT WORKSHEET

Travel Emissions Comparison

Name: _____

Date: _____

Below are some example emissions for different types of travel. Use these to help complete the table.



Active Travel Example Calculations

Let's calculate the total emissions for Active Travel Examples #1 and #2

Use this formula: CO₂ per km × Distance = Emissions

Complete these tables:

Student Name	Travel Mode	CO ₂ per km	x	Distance (km)	=	Emissions
Travel Example #1	Walk		x	1.5	=	
Travel Example #1	Bus		x	4	=	
				TOTAL Emissions =		

Student Name	Travel Mode	CO ₂ per km	x	Distance (km)	=	Emissions
Travel Example #2	Walk		x	0.5	=	
Travel Example #2	Bus		x	6	=	
				TOTAL Emissions =		

Which trip to school produced the most CO₂? _____