



LESSON PLAN

Features of A Road Environment



STAGE
Foundation



DURATION
50 minutes



SUBJECT
**Health &
Physical
Education**



RESOURCE OVERVIEW

Road safety is not instinctive or automatic. Children need to develop the road safety knowledge and skills to cope with traffic and roads.

In this lesson, students learn about road environment features, create their own streetscapes, and develop their vocabulary and understanding of roads to be built upon in future road safety lessons.

Resource Details

CURRICULUM ALIGNMENT

This lesson supports:

Identify people and actions that help keep themselves safe and healthy (VCHPEP059)

Identify actions that promote health, safety and wellbeing (VCHPEP062)

RESOURCE REQUIREMENTS

In this lesson, teacher/s will need:

- A computer and projector, and/or digital whiteboard to show pictures
- Photos of different streetscapes (included below)
- My street worksheet

LEARNING INTENTION

In this lesson, students will:

- Identify features of a road environment and their purpose.

SUCCESS CRITERIA

By the end of this lesson, students should be able to:

- Name various features found around roads.
- Describe the purpose various features found around roads.

Lesson Plan

Tuning in

APPROX. 10 MINUTES

Show students photos of different streetscapes (included below). Choose those that are most relevant to your students.

Ask students to identify different features they see in the pictures. Students may also wish to add other features they've seen that are not shown in the pictures.

Possible features may include:

- Footpath
- Driveway
- Laneway
- Fence
- Road
- Road sign
- Road marking
- Nature-strip
- Kerb
- Zebra pedestrian crossing
- Pedestrian crossing
- Traffic lights
- Railway crossing
- Roundabout
- Street vegetation (trees, shrubs)
- Street furniture (bus shelters, post boxes, benches)
- Tram stops

Write down features students identify.

Discuss the purpose of each feature. For example, footpaths give us a place to walk safely, road signs give us information or tell us how to use the road safely.

Main activity: Streetscape worksheet

APPROX. 30 MINUTES

Model the My Street worksheet for students. Students will need to create a streetscape. They need to name their street and draw some road features listed on the worksheet.

Ask students to complete the worksheet.

Reflecting activity

APPROX. 10 MINUTES

Ask students to share their worksheet with the class.

When sharing, ask students to identify the purpose of some of the features they have drawn on their worksheet.

Resource Worksheet

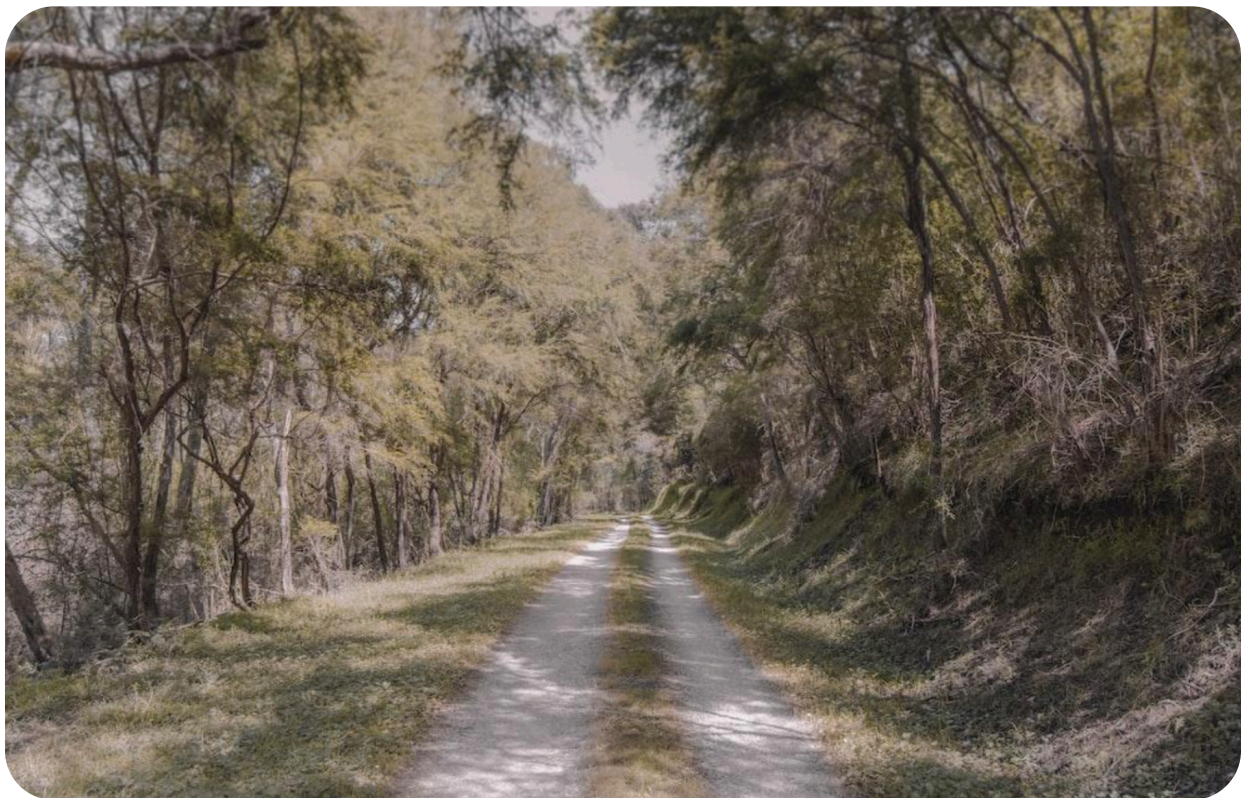
Resource 1: Images





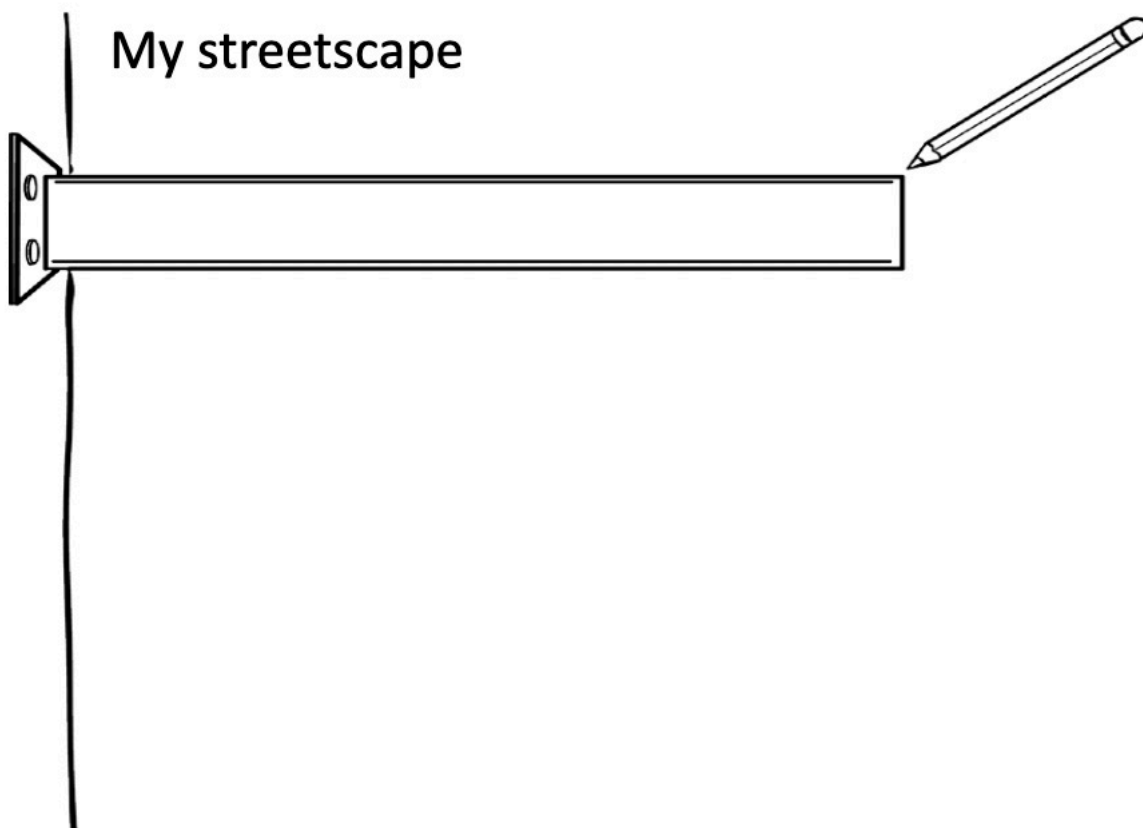
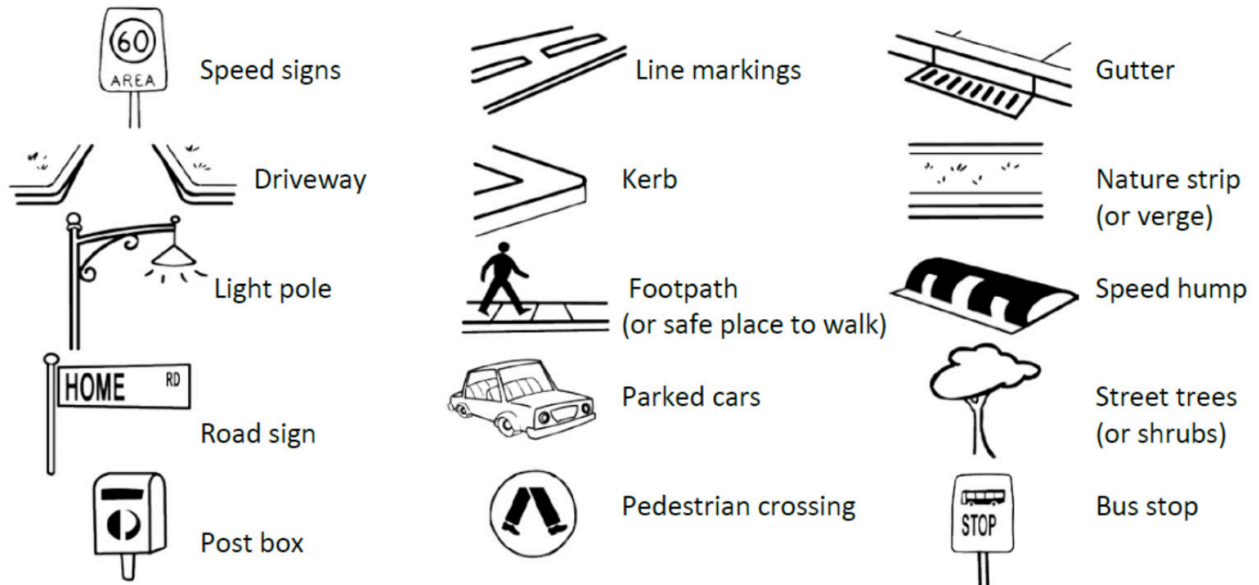






Resource 2: Road features

Here are some road features you could include:





www.roadsafetyeducation.vic.gov.au