

## LESSON 2 : GAME RULES AND CARDS

# Sustainable Travel Snap!

### Objective:

Match **Travel Action** cards with their corresponding **Earth Impact** cards to create a sustainable travel match (called a **SNAP!**). Players score points by snapping the most environmentally friendly combinations.

### How to Play:

1. Shuffle the full deck (32 cards).
2. Students play in pairs or groups of four.
3. Place the deck face down in a stack.
4. Players take turns flipping one card at a time, placing the **Travel Action** cards in one pile and the **Earth Impact** cards in a separate pile next to them.
5. When a player sees a matching **Travel Action** and **Earth Impact** combination (see list below), they call out “**Snap!**” and explain why it matches.
6. If correct, they collect the pair and earn:
  - o **3 points** for an environmentally friendly match
  - o **2 points** for a low to moderate eco-friendly match
  - o **1 point** for a high to very high environmental impact match
  - o **0 points** if the snap is incorrect
7. Continue until all cards are used. Tally points to find the most sustainable traveller!

### Differentiation: Play as a Memory Game

Lay all cards face down on the ground in a grid, keeping the two groups separate but visible.

**Teams take turns.** On each turn, one player flips:

- **1 card** from the **Travel Action** side, and
- **1 card** from the **Earth Impact** side.

The team must decide **if the two cards are a correct match** based on their real-world connection.

If they believe it's a match, they call out “**Snap!**” and explain the connection.

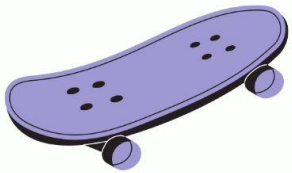
If the explanation is **wrong**, the cards are turned back over. Scoring is the same as above.

Teams **work together** to remember card positions and think critically about sustainability.

## Lesson 2: Game Rules and Cards: Sustainable Travel Snap!

### Matching Pairs (SNAPS!)

Travel Action Cards	Earth Impact Cards	Points
Walking to school	Totally Clean	● 3
Riding a bike	Zero Emissions	● 3
Riding a scooter	Earth Friendly	● 3
Skateboarding	Clean Air	● 3
Taking the train	Low Emissions	● 2
Riding an e-scooter	Minimal Pollution	● 2
Riding an e-bike	Mostly Clean Air	● 2
Catching a tram	Low Carbon Footprint	● 2
Driving an electric car	Low Pollution	● 2
Taking the bus	Reduced Emissions (shared travel)	● 2
Carpooling with friends	Reduced Traffic (shared travel)	● 2
Drive and walk	Medium carbon footprint	● 2
Driving a hybrid car	Medium Pollution	● 2
Flying	Big Polluter	● 1
Catching a taxi	High Emissions	● 1
Driving with one person	Heavy Carbon Footprint	● 1



**SKATE-BOARDING**



**CARPOOLING WITH FRIENDS**



**CATCHING A TAXI**



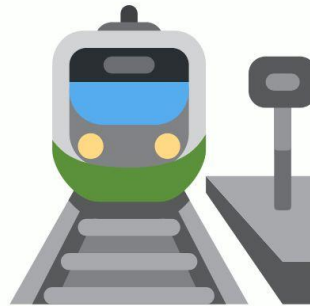
**CATCHING A BUS**



**WALKING TO SCHOOL**



**RIDING A BIKE**



**TAKING THE TRAIN**



**USING A SCOOTER**

**TRAVEL**



**ACTION CARD**

**TRAVEL**



**ACTION CARD**

**TRAVEL**



**ACTION CARD**

**TRAVEL**



**ACTION CARD**

**TRAVEL**



**ACTION CARD**

**TRAVEL**



**ACTION CARD**

**TRAVEL**



**ACTION CARD**

**TRAVEL**



**ACTION CARD**

**TRAVEL**



**ACTION CARD**

**TRAVEL**



**ACTION CARD**

**TRAVEL**



**ACTION CARD**

**TRAVEL**



**ACTION CARD**

**TRAVEL**



**ACTION CARD**

**TRAVEL**



**ACTION CARD**

**TRAVEL**



**ACTION CARD**

**TRAVEL**



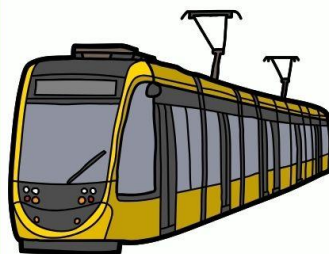
**ACTION CARD**



**DRIVING A  
HYBRID CAR**



**DRIVING  
WITH 1 PERSON**



**CATCHING A  
TRAM**



**RIDING AN  
E-BIKE**



**DRIVE AND  
WALK**



**DRIVING AN  
ELECTRIC CAR**



**FLYING**



**RIDING AN  
E-SCOOTER**

**CLEAN AIR**



**REDUCED  
TRAFFIC**



**HIGH  
EMISSIONS**



**MODERATE  
POLLUTION**



**TOTALLY  
CLEAN**



**ZERO  
EMISSIONS**



**LOW  
EMISSIONS**



**EARTH  
FRIENDLY**



**EARTH**



**IMPACT CARD**

**EARTH**



**IMPACT CARD**

**EARTH**



**IMPACT CARD**

**EARTH**



**IMPACT CARD**

**EARTH**



**IMPACT CARD**

**EARTH**



**IMPACT CARD**

**EARTH**



**IMPACT CARD**

**EARTH**



**IMPACT CARD**



**EARTH**



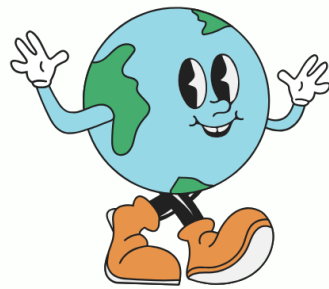
**IMPACT CARD**

**EARTH**



**IMPACT CARD**

**EARTH**



**IMPACT CARD**

**EARTH**



**IMPACT CARD**

**EARTH**



**IMPACT CARD**

**EARTH**



**IMPACT CARD**

**EARTH**



**IMPACT CARD**

**EARTH**



**IMPACT CARD**

**REDUCED  
EMISSIONS**



**HEAVY CARBON  
FOOTPRINT**



**LOW CARBON  
FOOTPRINT**



**MOSTLY  
CLEAN AIR**



**MODERATE  
CARBON  
FOOTPRINT**



**LOW  
POLLUTION**



**BIG  
POLLUTER**



**MINIMAL  
POLLUTION**

